



## STONEWALL HOME LEARNING PACK –

### LGBT History Month 2021

This LGBT History Month, we're focussing on the lives and work of some courageous LGBT women – for special schools and colleges, we've chosen Catherine Duleep Singh. LGBT History Month was founded by Schools Out, who have been campaigning for LGBT inclusive education for 47 years. Due to Covid-19, we've created home learning packs as well as lesson packs to ensure that your students can benefit from the lesson content wherever they're learning. You'll find the lesson pack that mirrors this home learning pack on our [website](#). Each home learning pack has suggested activities and resources for children to and young people complete at home. This is the version of the pack aimed at children and young people who attend special schools and colleges, you'll find other versions of the packs on our [website](#).

### Who are Stonewall?

This resource is produced by Stonewall, a UK-based charity that stands for the freedom, equity and potential of all lesbian, gay, bi, trans, queer, questioning and ace (LGBTQ+) people. At Stonewall, we imagine a world where LGBTQ+ people everywhere can live our lives to the full. Founded in London in 1989, we now work in each nation of the UK and have established partnerships across the globe. Over the last three decades, we have created transformative change in the lives of LGBTQ+ people in the UK, helping win equal rights around marriage, having children and inclusive education.

Our campaigns drive positive change for our communities, and our sustained change and empowerment programmes ensure that LGBTQ+ people can thrive throughout our lives. We make sure that the world hears and learns from our communities, and our work is grounded in evidence and expertise.

Stonewall is proud to provide information, support and guidance on LGBTQ+ inclusion; working towards a world where we're all free to be. This does not constitute legal advice, and is not intended to be a substitute for legal counsel on any subject matter. To find out more about our work, visit us at [www.stonewall.org.uk](http://www.stonewall.org.uk).

Enjoyed this resource? Join us today!

Our expert team of qualified teachers and trainers have supported hundreds of settings in their inclusion journeys to make sure all children and young people are free to be themselves. [Our membership programmes for schools and colleges, and for children and young people's services, have something to offer every setting](#). Join us today and benefit from:

- CPD-accredited e-learning modules
- Regular professional development webinars
- Access to our award schemes
- Personalised support from our team

All this, and more, is included in the price you pay for membership.



Looking for custom training? Our experienced trainers can provide quality training sessions for ITT providers, teaching schools, professional development networks and many other providers. Email us [education@stonewall.org.uk](mailto:education@stonewall.org.uk) to find out more and discuss your needs.

## Choose the right activity



the simplest version of the activity



the standard version of the activity



the trickiest version of the activity



## Activities

- Read the Catherine Duleep Singh [e-book](#) with a family member or friend. Complete the [workbook](#) as you go along. You'll find the different versions of each on our [website](#). Version 1 is the trickier version of the eBook, version 2 is the simpler, Widgit symbol supported, version.
- Complete the Catherine Duleep Singh quiz.
- Draw a picture of Catherine Duleep Singh and write a sentence about her.
- Look at the photos of Catherine Duleep Singh and communicate about them with a family member or friend.
- Make a poster about Catherine Duleep Singh.



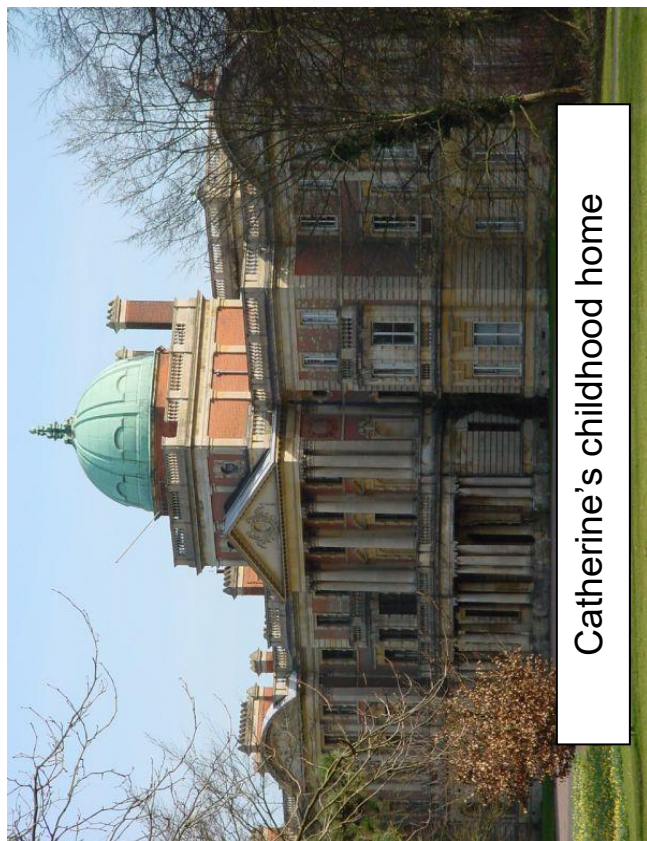
# Resources

## Photo pack

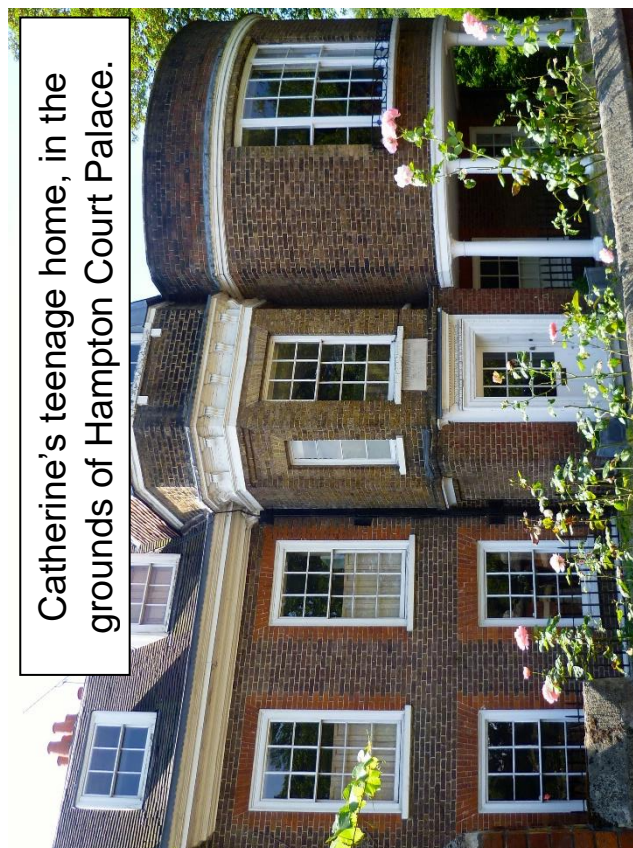




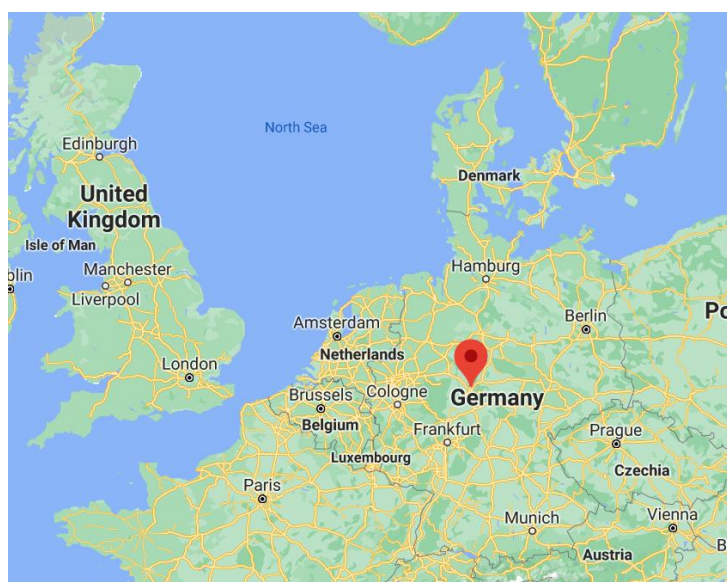




Catherine's childhood home

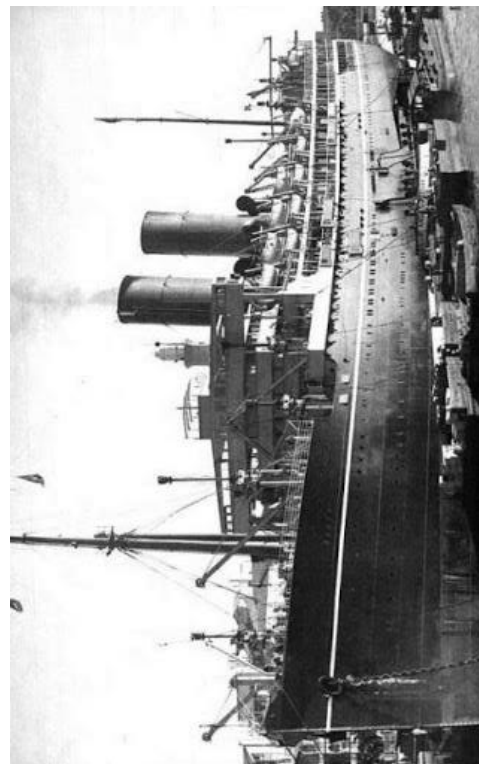
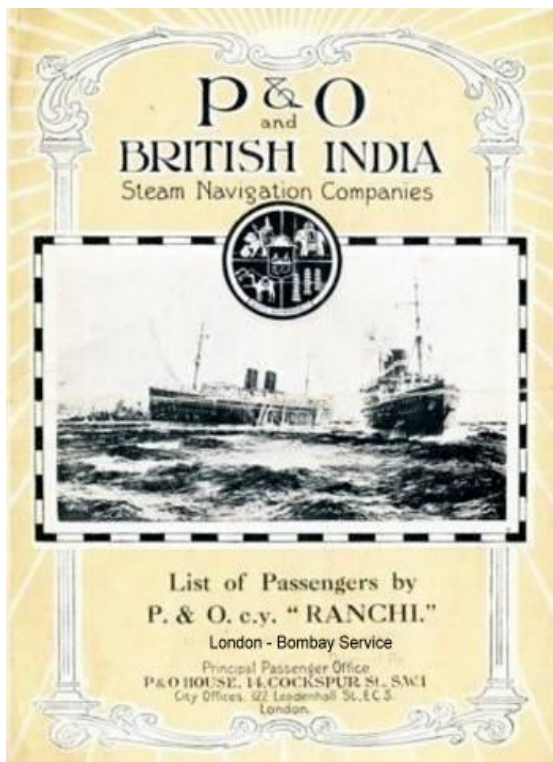


Catherine's teenage home, in the grounds of Hampton Court Palace.



Catherine's godmother







# Catherine Duleep Singh Communication Mat

LGBT History Month 2021: SEND/ASN/ALN home learning pack

 Catherine	 Dad	 Queen Victoria	 Royal family	 Lina	 Lesbian
 Woman	 Women	 Men	 Brown skin	 Long time ago	 England
 India	 Germany	 Fair	 Unfair	 Danger	 Helped
 Escape	 Long time ago	 Jewish	 Visited	 Lived	 House

Created in WdigitOnline.com for Stonewall Education & Youth

Wdigit Symbols © Wdigit Software 2002 - 2021

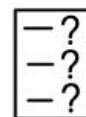


Name \_\_\_\_\_

Date \_\_\_\_\_



Catherine Duleep Singh



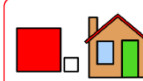
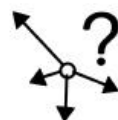
Quiz

1. When was Catherine born?



A long  
time ago

2. Where did Catherine live when she was a child?



A big  
house

3. Who was friends with Queen Victoria?



Catherine's  
dad

4. Who was Catherine's partner?



Lina

5. Who did Catherine help?



Jewish  
families



A big  
house



A tent



Catherine's  
dad



Lina



Jewish  
families



Men



A long  
time ago



Last year

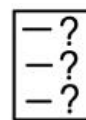


Name \_\_\_\_\_

Date \_\_\_\_\_



Catherine Duleep Singh



Quiz



1. When was Catherine born?





2. Where did Catherine live when she was a child?





3. Who was friends with Queen Victoria?





4. Who was Catherine's partner?





5. Who did Catherine help?





A big  
house



A tent



Catherine's  
dad



Lina



Jewish  
families



Men



A long  
time ago



Last year



Name \_\_\_\_\_

Date \_\_\_\_\_

## Catherine Duleep Singh Quiz

1. When was Catherine born?

\_\_\_\_\_

2. Where did Catherine live when she was a child?

\_\_\_\_\_

3. Who was friends with Queen Victoria?

\_\_\_\_\_

4. Who was Catherine's partner?

\_\_\_\_\_

5. Who did Catherine help?

\_\_\_\_\_